

**Embedded**

# **Intel<sup>®</sup> Embedded Media and Graphics Driver for Windows\* XP v1.6 GUI Setting for End Users**

**Application Note**

---

*March 2011*



INFORMATION IN THIS DOCUMENT IS PROVIDED IN CONNECTION WITH INTEL PRODUCTS. NO LICENSE, EXPRESS OR IMPLIED, BY ESTOPPEL OR OTHERWISE, TO ANY INTELLECTUAL PROPERTY RIGHTS IS GRANTED BY THIS DOCUMENT. EXCEPT AS PROVIDED IN INTEL'S TERMS AND CONDITIONS OF SALE FOR SUCH PRODUCTS, INTEL ASSUMES NO LIABILITY WHATSOEVER AND INTEL DISCLAIMS ANY EXPRESS OR IMPLIED WARRANTY, RELATING TO SALE AND/OR USE OF INTEL PRODUCTS INCLUDING LIABILITY OR WARRANTIES RELATING TO FITNESS FOR A PARTICULAR PURPOSE, MERCHANTABILITY, OR INFRINGEMENT OF ANY PATENT, COPYRIGHT OR OTHER INTELLECTUAL PROPERTY RIGHT.

UNLESS OTHERWISE AGREED IN WRITING BY INTEL, THE INTEL PRODUCTS ARE NOT DESIGNED NOR INTENDED FOR ANY APPLICATION IN WHICH THE FAILURE OF THE INTEL PRODUCT COULD CREATE A SITUATION WHERE PERSONAL INJURY OR DEATH MAY OCCUR.

Intel may make changes to specifications and product descriptions at any time, without notice. Designers must not rely on the absence or characteristics of any features or instructions marked "reserved" or "undefined." Intel reserves these for future definition and shall have no responsibility whatsoever for conflicts or incompatibilities arising from future changes to them. The information here is subject to change without notice. Do not finalize a design with this information.

The products described in this document may contain design defects or errors known as errata which may cause the product to deviate from published specifications. Current characterized errata are available on request.

Contact your local Intel sales office or your distributor to obtain the latest specifications and before placing your product order.

Copies of documents which have an order number and are referenced in this document, or other Intel literature, may be obtained by calling 1-800-548-4725, or go to: [http://www.intel.com/#/en\\_US\\_01](http://www.intel.com/#/en_US_01)

BunnyPeople, Celeron, Celeron Inside, Centrino, Centrino Inside, Cilk, Core Inside, i960, Intel, the Intel logo, Intel AppUp, Intel Atom, Intel Atom Inside, Intel Core, Intel Inside, Intel Insider, the Intel Inside logo, Intel NetBurst, Intel NetMerge, Intel NetStructure, Intel SingleDriver, Intel SpeedStep, Intel Sponsors of Tomorrow., the Intel Sponsors of Tomorrow. logo, Intel StrataFlash, Intel vPro, Intel XScale, InTru, the InTru logo, the InTru Inside logo, InTru soundmark, Itanium, Itanium Inside, MCS, MMX, Moblin, Pentium, Pentium Inside, skool, the skool logo, Sound Mark, The Creators Project, The Journey Inside, vPro Inside, VTune, Xeon, and Xeon Inside are trademarks of Intel Corporation in the U.S. and/or other countries.

\*Other names and brands may be claimed as the property of others.

Copyright © 2011, Intel Corporation. All rights reserved.



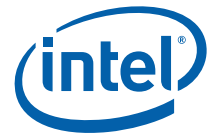
## Contents

---

<b>1.0</b>	<b>Introduction</b> .....	<b>5</b>
<b>2.0</b>	<b>Installing the Intel® EMGD Driver Package in Microsoft Windows* XP</b> .....	<b>5</b>
<b>3.0</b>	<b>Switching ON Display Properties End User Mode</b> .....	<b>6</b>
<b>4.0</b>	<b>Switching OFF Display Properties End User Mode</b> .....	<b>8</b>

Date	Revision	Description
March 2011	001	Initial release





## 1.0 Introduction

The Intel® Embedded Media and Graphic Driver GUI for Windows\* XP or Windows\* XP Embedded is intended for use by OEMs and system integrators to allow easy configuration of embedded systems with maximum flexibility of available driver settings and attributes. During the driver package installation this GUI gets integrated into the Microsoft Windows Display Properties Settings. After a system is configured and shipped as part of a production system, the end user should see and be able to adjust only a basic set of options in the Display Properties. All expert-mode settings should be hidden to avoid service calls and downtimes of production systems.

This application note contains instructions an OEM or System Integrator can use to turn the end user mode of the Display Properties on or off.

## 2.0 Installing the Intel® EMGD Driver Package in Microsoft Windows\* XP

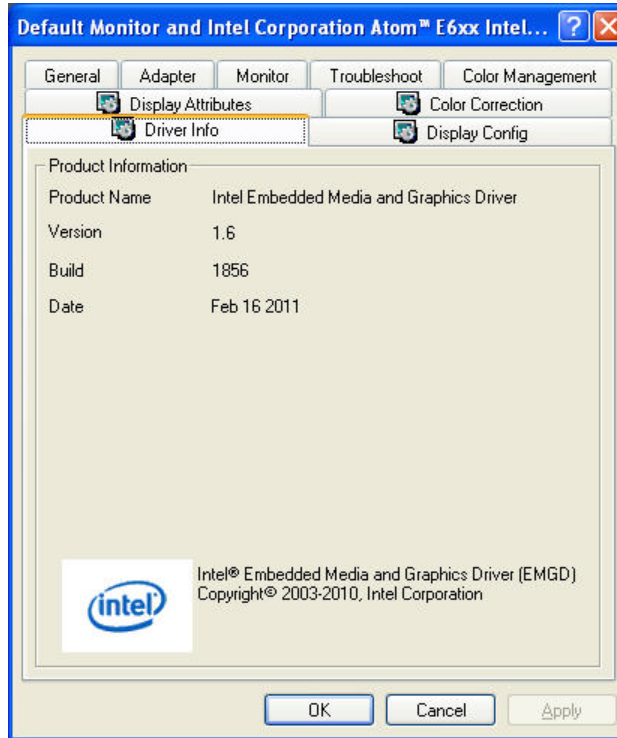
The driver package can be configured and created using the Configuration Editor Tool (CED) from the Intel® EMGD Release Package. See detailed descriptions for creating and installing the driver package in the User Guide (document number 442076).

In the driver package zip-file you will find the directory /Utilities which includes EMGDGUI.EXE. This tool provides a graphical interface for all driver and panel settings including these four tabs:

- Driver Information
- Display Configuration
- Display Attributes
- Color Correction

All of the above tabs are also shown when opening the Microsoft Windows\* Display Properties, clicking **Settings**, and then **Advanced**.

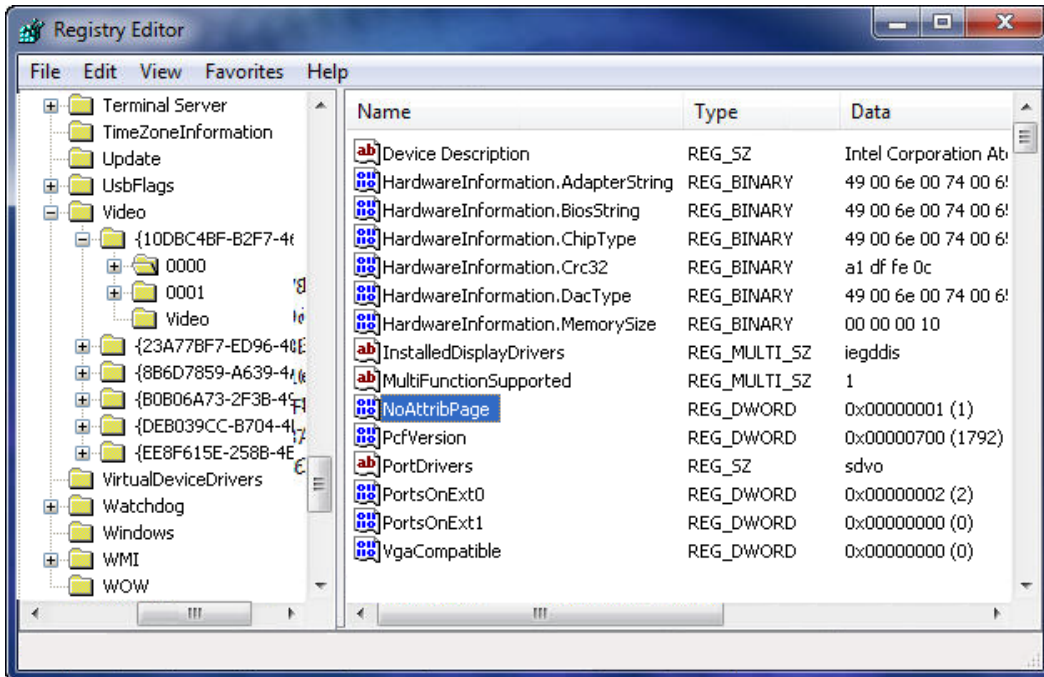
The next figure shows how the EMGD Display Properties should look after installation.



### 3.0 Switching ON Display Properties End User Mode

1. Open the Microsoft Windows Registry Editor:
  - a. Click the Start menu and then select **Run**.
  - b. Type `regedit` and then press Enter.
2. Go to `HKEY_LOCAL_MACHINE\SYSTEM\CurrentControlSet\Control\Video`. Here you will find multiple ClassID entries, each of them should have a key named "0000".
3. Look into all "0000" keys and note the ones where you see the following Device Description on the right side: "Intel Corporation Atom™ E6xx Intel® Embedded Media and Graphics Driver Function 0". If you have multiple entries they should all differ by the ConfigID setting.
4. On the screen where the "0000" key with the values and data is shown, right-click in the empty field on the right side and add a new DWORD value, giving it the name `NoAttribPage`.
5. Double-click on the new value name and give it a value of `0x1`.
6. Repeat steps 3-5 for each key noted in step 3.

The setting for a default configuration with ConfigID = 0x1 might look like this example:

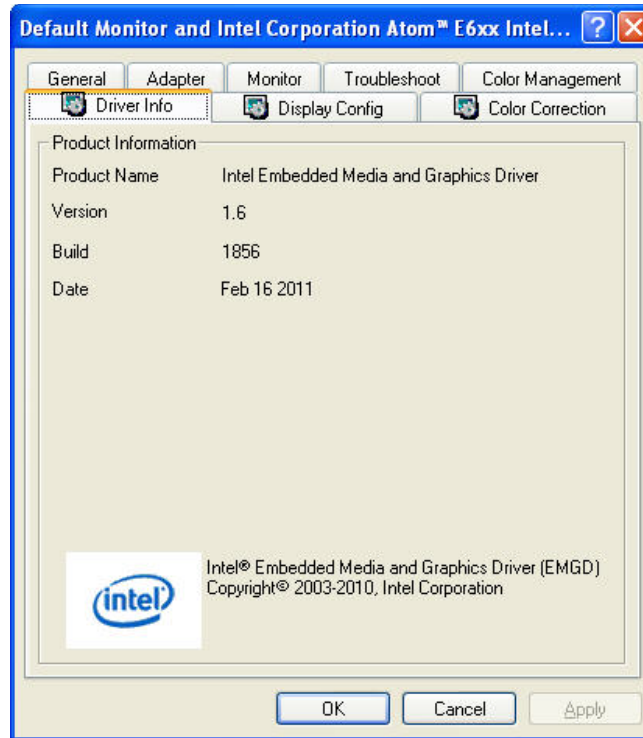


If you now open the Display Properties and click **Settings** and then **Advanced** you should see only the following three tabs from the Intel® EMGD Driver:

- Driver Information
- Display Configuration
- Color Correction

These are all settings that may be useful for the end user to change a system configuration or adjust the color settings. The tab with the Display Attributes is now hidden, preventing end users from changing port driver settings that may result in a dark screen and service calls or, worst case, downtime of a production system.

The next figure illustrates how the end user view should look with no Display Attributes tab.



## 4.0 Switching OFF Display Properties End User Mode

For experienced users or in case of a system returned to the vendor, you can switch back to the EMGDGUI expert mode by following the steps described in [Section 3.0, "Switching ON Display Properties End User Mode"](#) on page 6 and setting the value of the "NoAttribPage" to 0x0 instead of 0x1.

When opening the Display Properties Window, click on **Settings** and then **Advanced**. All four tabs appear again.